

SIMPLY EXTRAORDINARY EVENT SPACES



AN EVENT VENUE REIMAGINED

AREA15 is a blank canvas for any event you can dream of — as well as those you've yet to imagine. Infinitely configurable, customizable, and compelling, its mix-and-match spaces are designed to inspire, incubate, and initiate endless possibilities for any type of event.

LOCATION

- Located just off I-15 and Desert Inn Road
- Minutes from The Strip
- 220,000 square foot venue
- 900+ free parking spots



A LOOK INSIDE



- A platform for experiences, experiments and encounters to come to life.
- Event spaces surrounded by festival-inspired art, innovative design, and ground-breaking technology.
- Whether it's a concert, food festival, corporate conference, theater performance, or private party, the unique spaces are infinitely customizable for any type of event.
- From the moment a guest arrives, they are transported to a new reality unlike anything they've encountered before. Guests will make their way to the event spaces through The Spine, an ever-changing corridor filled with one-of-a-kind art and unique activations.



SANCTUARY

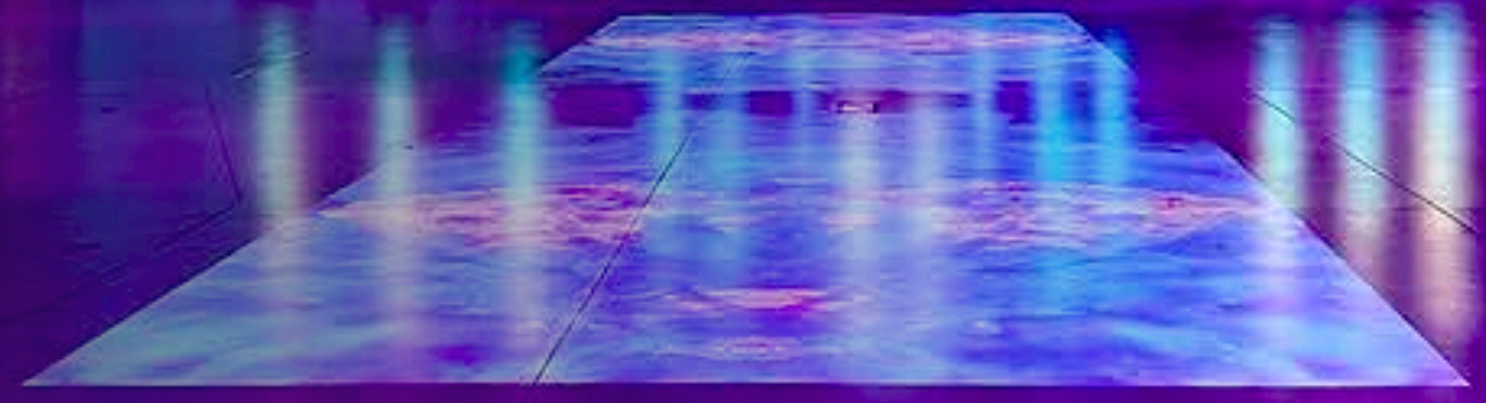
A space like no other in Las Vegas - or the world. Designed by Elora Hardy and her design firm, IBUKU, The Sanctuary is constructed of bamboo sourced from the mountains and valleys of Java and Bali. The airy, organic shape and lush, live greenery will transport you and your guests to a place of peace. Ideal for intimate events - ceremonies, workshops, soirées... Or close encounters of any kind.

- 1,900 square feet (50 feet diameter circular space)
- Capacity: 108 Reception

PORTAL

Highly flexible 6,500-square-foot indoor event space customizable for any configuration. Outfitted with 360 degree projection mapping, luxurious curtain and turn-key audio visual package. Ideal for corporate events or industry conferences, private parties or after-parties, intimate speaker events or theater performances. Make this space your own, wherever your imagination leads you.

- 6,584 square feet
- Capacity: 900 reception, 400 seated
- Dimensions: 100' x 67' | Grid height: 26'
- Power: 2x 5 wire disconnect, 100amp and 60 amp



A-LOT

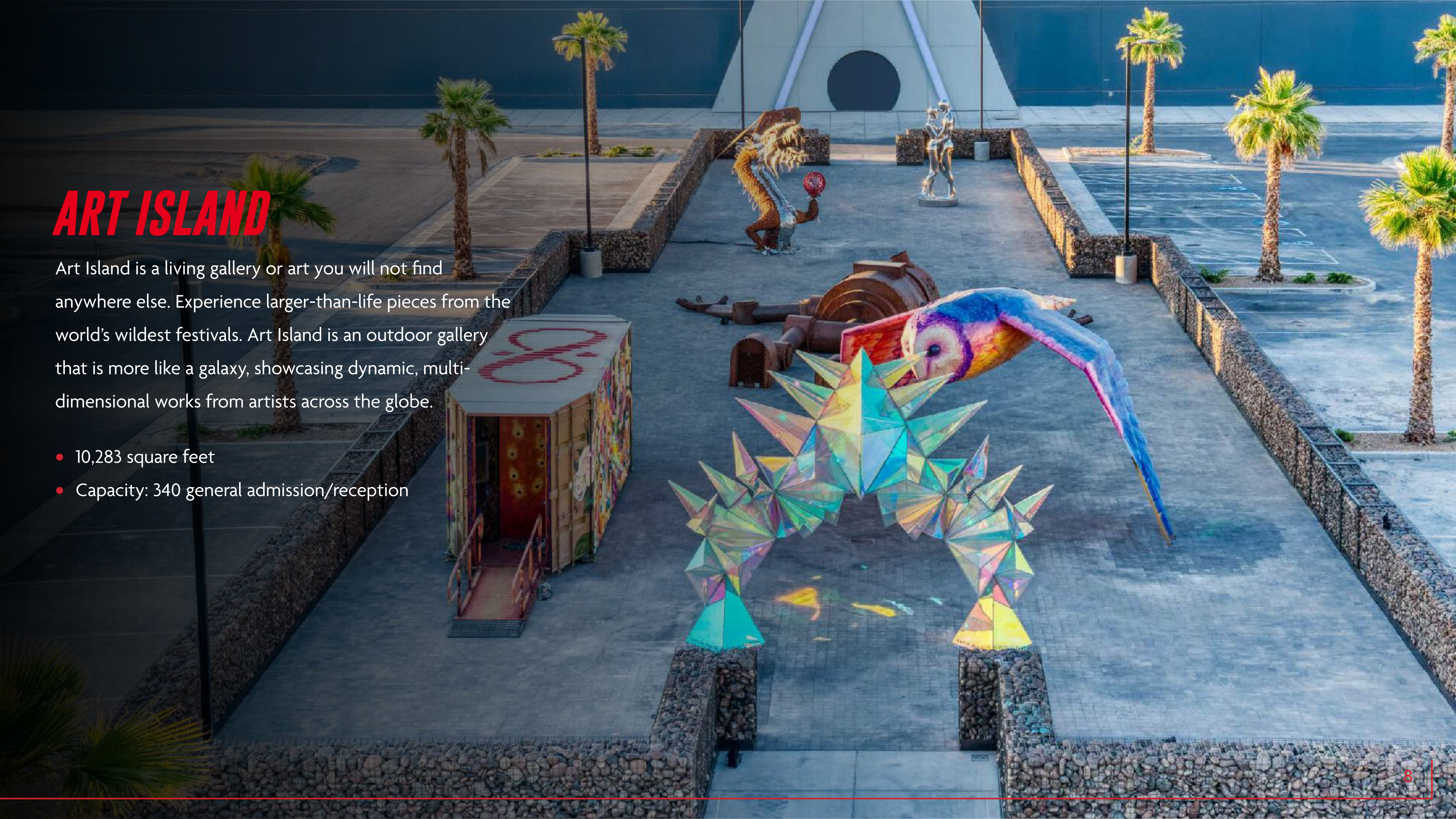
The 32,000-square-foot outdoor event space can be customized to fit any theme. Designed to be flexible in both layout and décor, the space offers a blank canvas and an extraordinary setting for any event imaginable. From flea markets to music festivals, concerts, private celebrations or corporate galas: the only limit is your imagination.

- Up to 32,454 square feet
- Capacity: 3,500 general admission/reception | 2,000 seated
- Dimensions: 300' x 108'
- 1,430 square foot deck with 95 person reception capacity
- Power: 6x 5 wire disconnect, 400, 200, 100amp and 60 amp

ART ISLAND

Art Island is a living gallery of art you will not find anywhere else. Experience larger-than-life pieces from the world's wildest festivals. Art Island is an outdoor gallery that is more like a galaxy, showcasing dynamic, multi-dimensional works from artists across the globe.

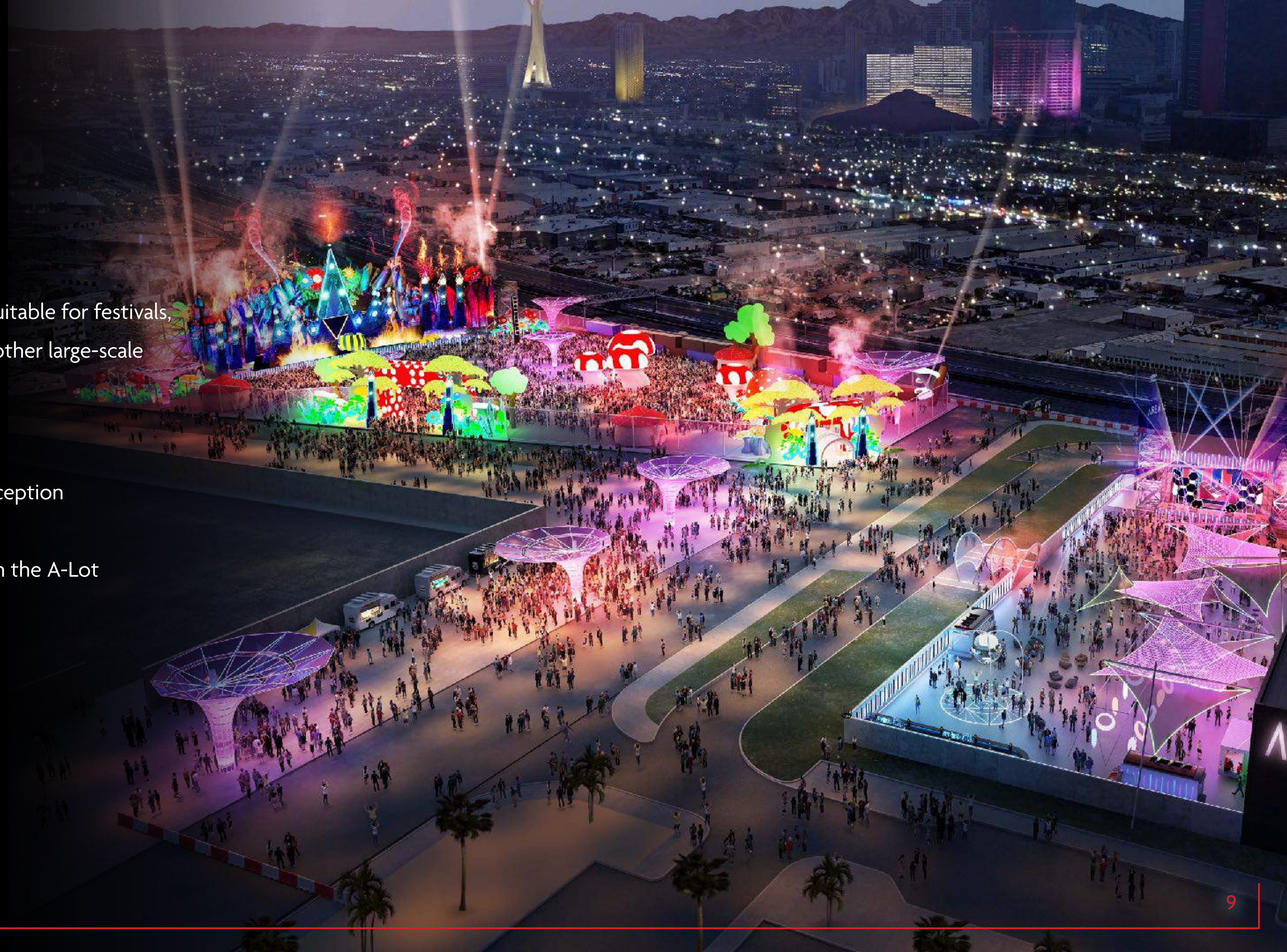
- 10,283 square feet
- Capacity: 340 general admission/reception



THE GROUNDS

Fully customizable, multi-use space suitable for festivals, carnivals, conventions, concerts and other large-scale events..

- 4 acres, 190,000 square feet
- Capacity: 15k general admission/reception
- Views of the Las Vegas skyline
- Can be booked in conjunction with the A-Lot



FULL BUYOUT



Turn your corporate or private event into an unforgettable experience that your guests will be talking about for years. Trust us—you'll never look at a company party the same way again.

AREA15 is the world's premier immersive arts and entertainment district, offering an unimaginable backdrop for any event. With a full indoor capacity of 9,000 guests, plus over 30,000 square feet of outdoor space, a buyout of AREA15 not only provides one of the most turnkey large-scale (3,000+ guests) events venues in Las Vegas, but also delivers one of the most unique experiences in the world.

- Want to have your own outdoor concert? A-LOT has you covered.
- Want a “ballroom” where you can flip the décor like you can a light switch? Portal is your space.
- Want to host your own arts festival? Art Island is all yours.
- Want to add on one-of-a-kind immersive activities for your guests? We have a barcade, axe throwing, virtual golf, AR/VR experiences, the most popular art collective exhibition in the world, and even a dual-track zip line—and this is just barely scratching the surface.

We look forward to forever changing the way you throw corporate events.



FOOD, DRINKS + ENTERTAINMENT

EXPERIENCES

EXPERIENCES

RETAIL

AREA15

1 **A-LOT**
It's... a lot.

8 **EMPORIUM**
...ARCADE...BAR...VENUE...
Part bar. Part arcade.
Part event venue. All good times.

15 **OZ EXPERIENCE**
by BackLight
Forget everything you know about VR.

20 **ROCKET FIZZ**
Blast off to candy confection.

2 **THE BEAST**
BY TODD ENGLISH
Unlike any dining experience you've ever had.

9 **DUELING AXES**
Satisfy your primal desires with axe throwing.

16 **MEOW WOLF**
OMEGA MART

21 *Wild Muse*
Art you can wear.

3 **Emack & Bolio's**
Ice cream that rocks!

10 **5i FIVE IRON GOLF**
Where golf meets high-tech entertainment.

17 **PARTICLE QUEST**
An augmented reality adventure.

4 **oddwood**
Libations beneath a luminous digital forest.

11 **Birdly**
A flight simulator to leave you soaring.

18 **VIRTUALIS V3**
Coming Soon!

5 **PORTAL**
360° projection mapped immersive experience.

12 **BRAIN STORM**
What's your story? The brain knows.

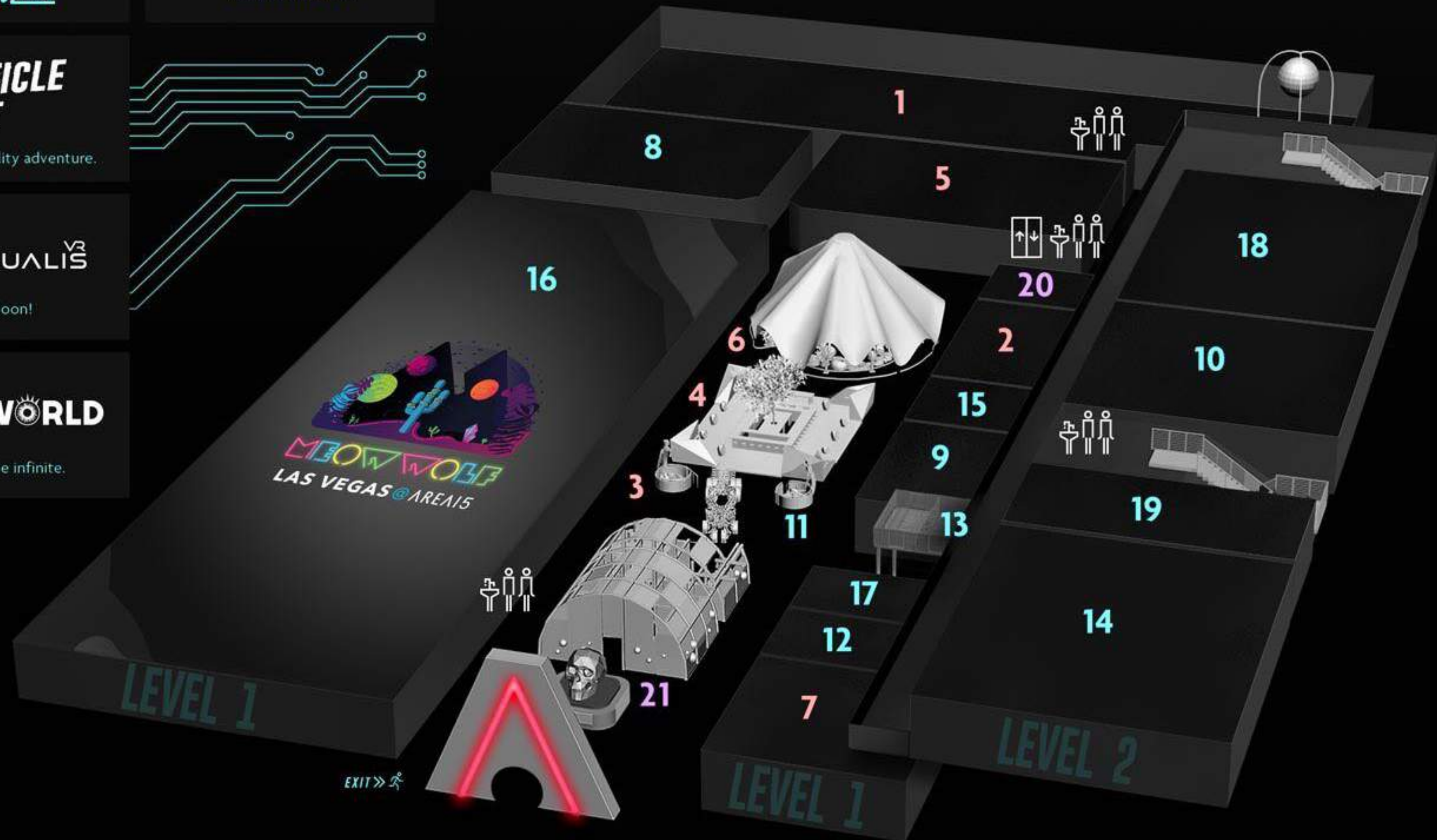
19 **WINK WORLD**
Portals into the infinite.

6 **SANCTUARY**
Find your zen in a bamboo volcano.

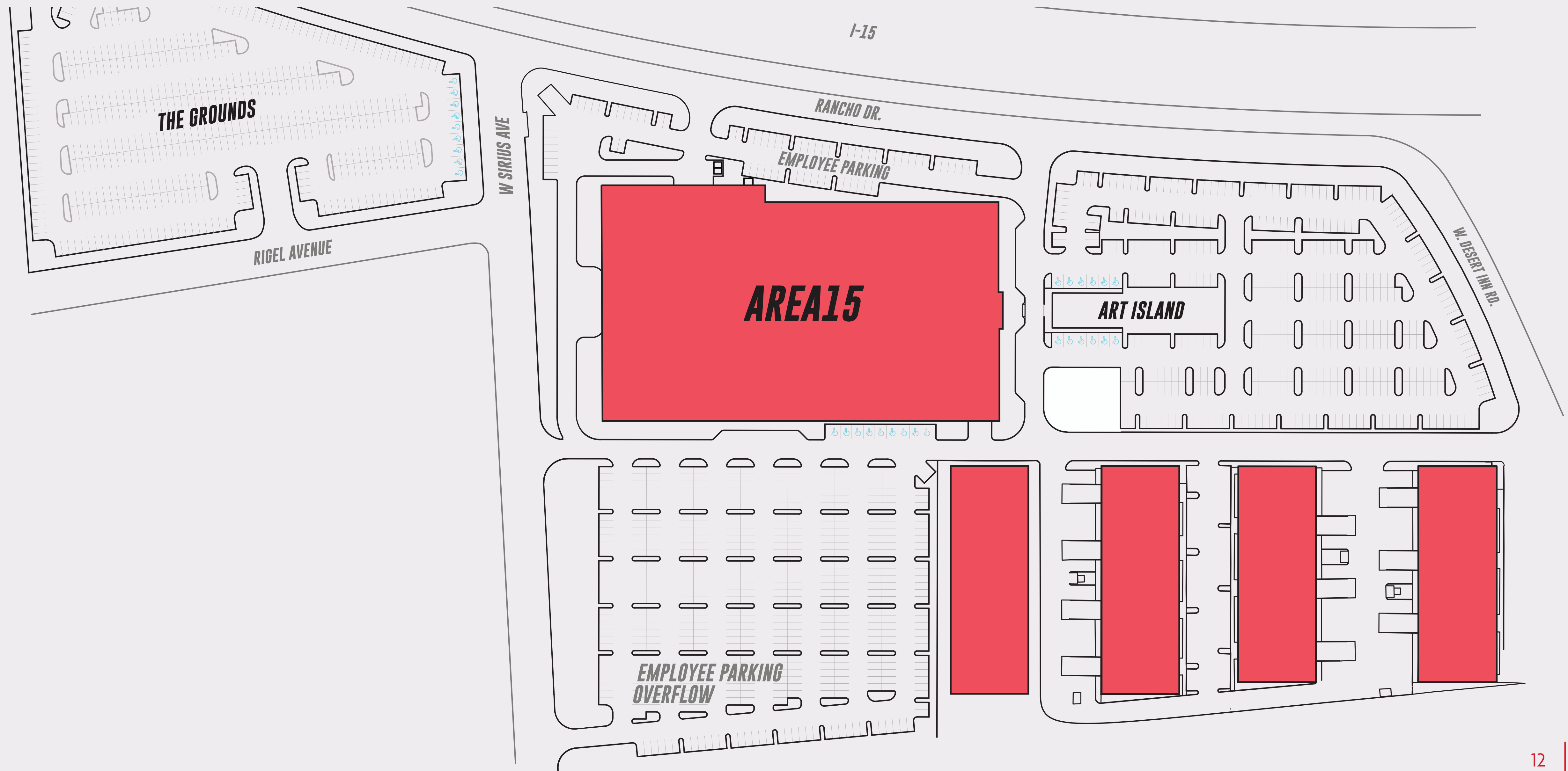
13 **HALEY'S COMET**
Dip, soar & glide above AREA15.

7 *Lost Spirits*
DISTILLERY
Coming Soon!

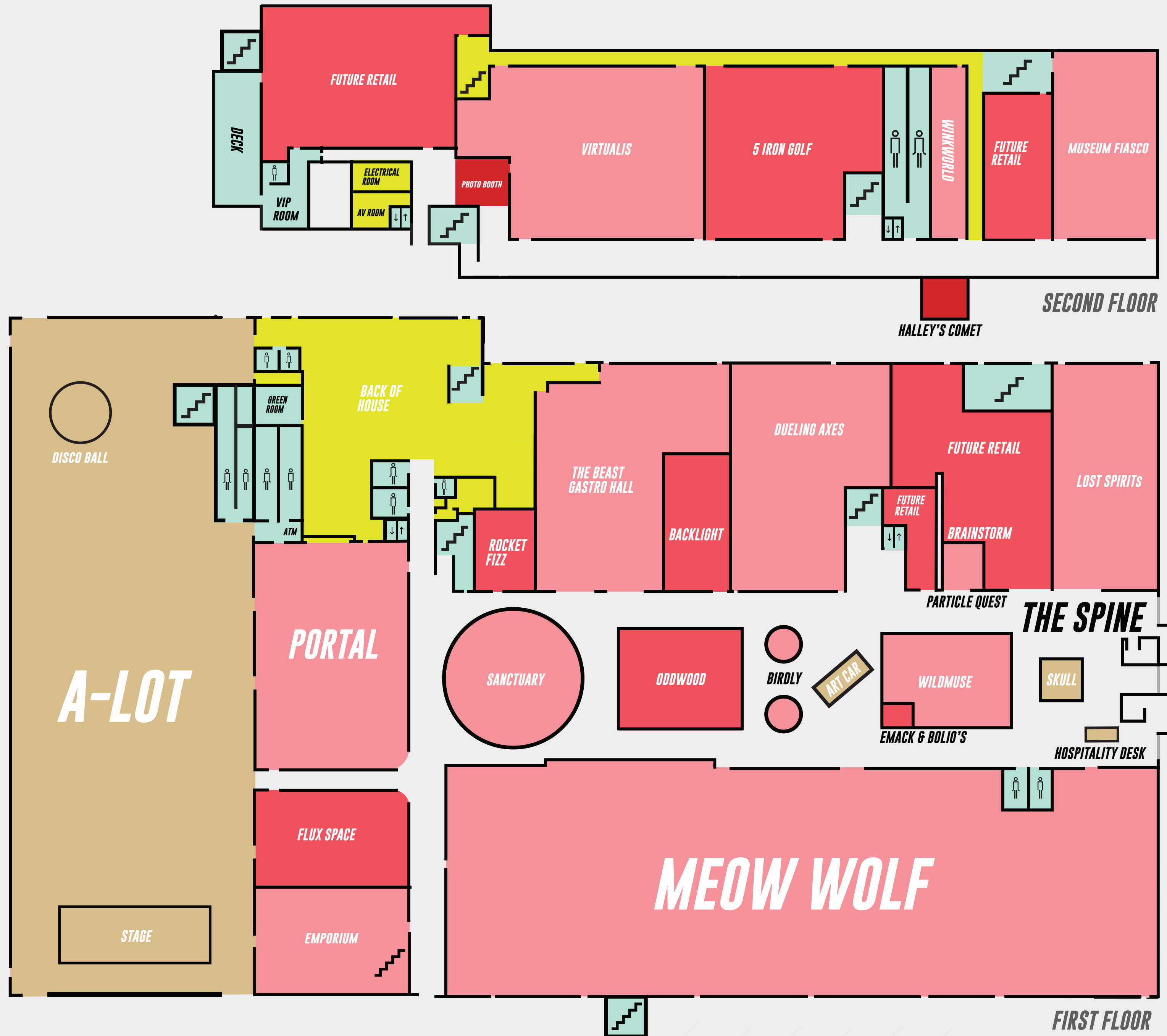
14 **MUSEUM FIASCO**
An immersive sound & light spectacle.



CAMPUS MAP



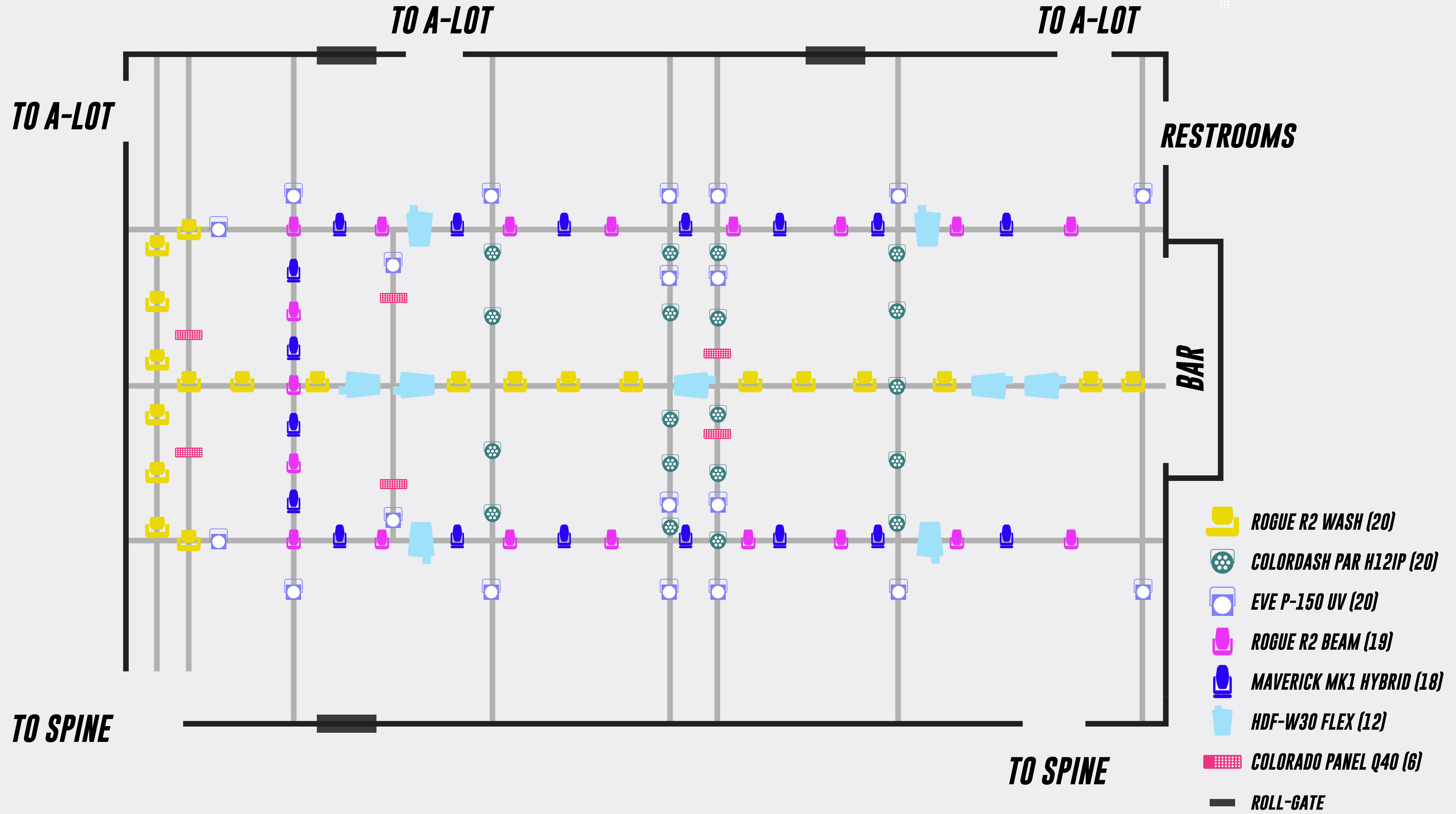
INTERIOR



MAP KEY

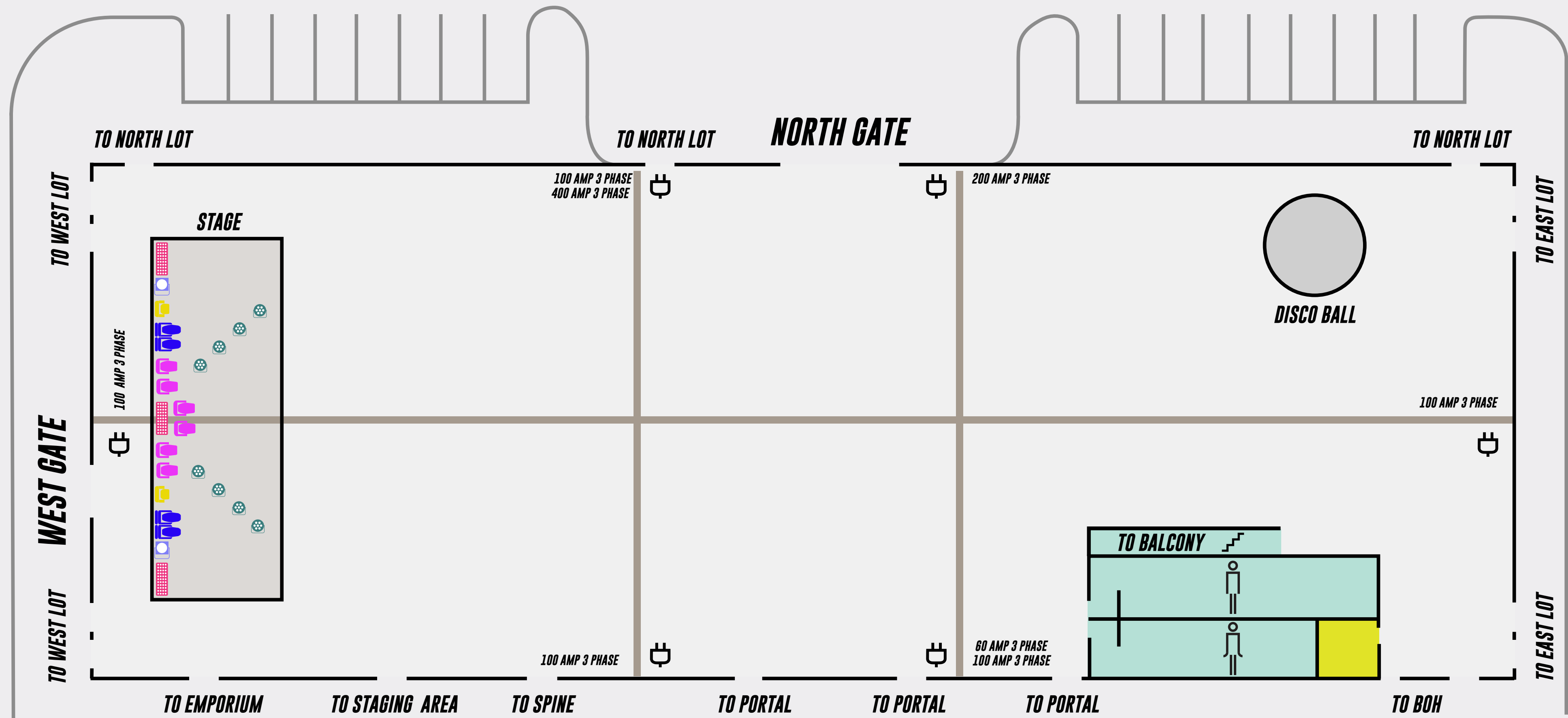
- PAID EXPERIENCES
- OPEN EXPERIENCES
- BACK OF HOUSE

PORTAL FLOORPLAN

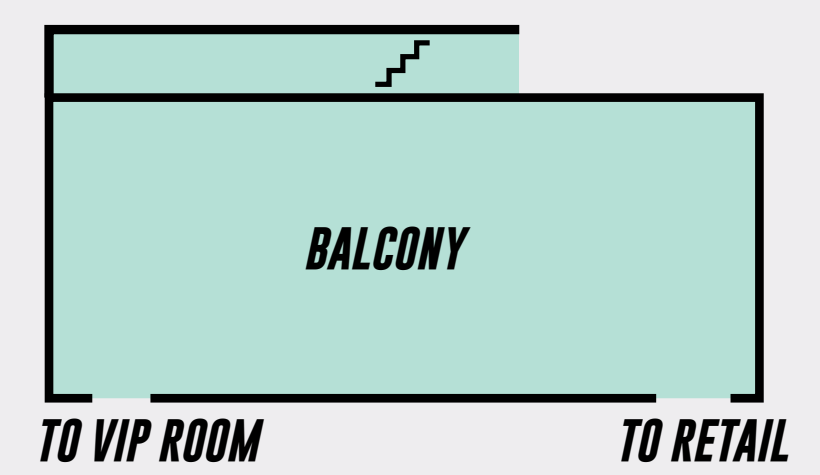


-  **ROGUE R2 WASH (20)**
-  **COLORDASH PAR H12IP (20)**
-  **EVE P-150 UV (20)**
-  **ROGUE R2 BEAM (19)**
-  **MAVERICK MK1 HYBRID (18)**
-  **HDF-W30 FLEX (12)**
-  **COLORADO PANEL Q40 (6)**
-  **ROLL-GATE**

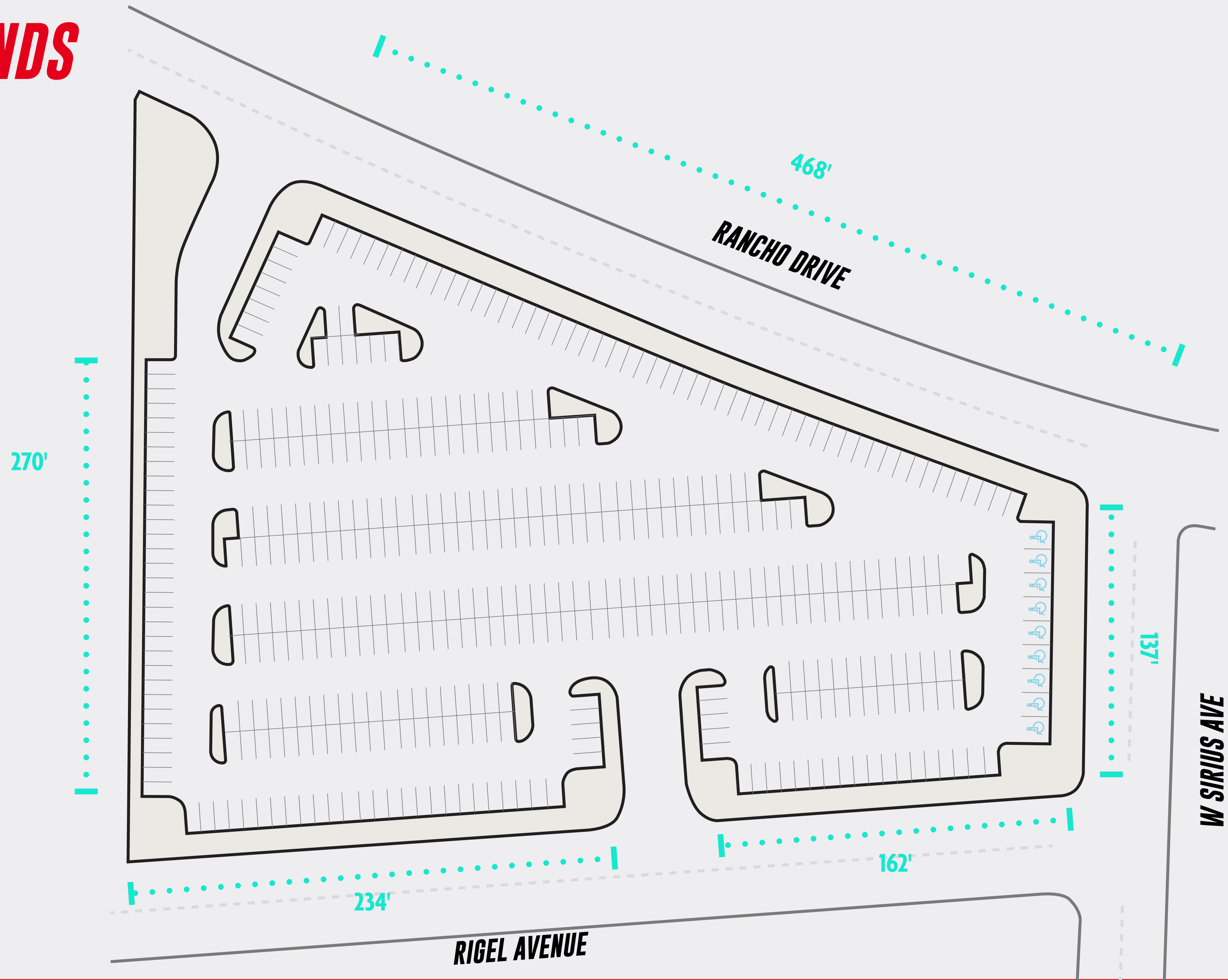
A-LOT



- POWER OUTLET**
- RESTROOMS**
- CABLE TROUGH**
- PUBLIC FACILITIES**
- BACK OF HOUSE**
- ROGUE R2 WASH (2)**
- COLORDASH PAR H12IP (4)**
- ROGUE BEAM R2X (4)**
- COLORADO PANEL Q40 (3)**
- COLORADO 2 SOLO**
- MYTHOS 2 (4)**



THE GROUNDS



AREA15 CAPACITIES



<i>SPACE</i>	<i>SQ FT</i>	<i>DIMENSIONS</i> L x W	<i>CEILING</i>	<i>RECEPTION</i>	<i>BANQUET</i> 8 Seat	<i>BANQUET</i> 10 Seat	<i>THEATER</i>	<i>CLASSROOM</i>	<i>U-SHAPE</i>	<i>SQUARE</i> Hollow	<i>EXHIBIT</i> 8' x 10'	<i>EXHIBIT</i> 10' x 10'
Sanctuary	1,962	50' Diameter	30'	108	72	90	-	-	24	36	-	-
Portal	6,584	100 x 66	22'	906	320	400	660	315	56	72	25	20
Art Island (Outdoors)	10,283	-	-	342	-	-	-	-	-	-	-	-
A-LOT (Outdoors)	32,454	300 x 108	-	3,500	1,600	1,950	2,500	1,323	-	-	154	126
A-LOT (Deck)	1,430	65 x 22	-	95	-	-	-	-	-	-	-	-
Parking Lot (Combined)	309,000	925 Spaces	-	-	-	-	-	-	-	-	-	-
South Parking Lot	162,000	381 Spaces	-	-	-	-	-	-	-	-	-	-
West Parking Lot	147,000	462 Spaces	-	-	-	-	-	-	-	-	-	-
Entire Venue	120,000	400 x 300	-	-	-	-	-	-	-	-	-	-
The Spine (1st floor)	26,360	329 x 80	22'	-	-	-	-	-	-	-	-	-

PORTAL TECH PACK



PROJECTION & VIDEO

12 X Barco HDF-W30 3 Chip DLP 30K Lumen

- 10 To Map Room
- 2 Rentals For Various Needs

2X Kvant 3W Klubmaster Laser Projectors

Drop Down Screens

- Drop Down Screens 29' X 18'

2 X Lambda Labs Projection Media Server Computer W/ Resolume

- I9-9920X, 12 Core, 2X TRX 6000, 64Gb Ram

2 X LG 49W195C-W Ultra-Wide Monitors For Media Server

2 X Lightware MX2-8X8-DH-8DPI-A

4 X Datapath FX4SDI

1 X Aja Gen10 Sync Generator

CAMERA

1 X Blackmagic Atem Television Studio Pro HD

2X LG 43UD79-B Preview / Program Monitors

1 X Lynx/Yellbrk 2 Hdmi To SDI / 4 SDI To SDI

1X Motu Midi Express Xt Usb Midi Timecode Sync

1X Behringer X-Touch Universal Controller

1 Panasonic Ptz Camera System

- 3 PTZ Cameras (AW-UE70KPJ)
- 1 Controller (Rp50Nj)

AUDIO - FRONT OF HOUSE

Console: Yamaha QL5

Input Boxes: 2X Rio3224

Processing: 2X Meyer Galaxy 816

Overhead System: 12X Meyer Ultra-X42, 2X Meyer LFC-750

AUDIO - PORTABLE / HUNG

10X Meyer Leopard Line Array Speaker

5 A Side On Rolling Carts Or Hung By Motors 2 Locations

Ground: 4X Meyer LFC-1100, 4X Meyer VLFC

Monitors: 4X Meyer MJF-210, 2X Meyer 900-LFC

STAGING

35X 4'X8' Steel Deck (Various Configurations Available)

- Adjustable Height From 32-48" Height

2X Stair Units

BACKLINE

5 X CDJ2000 Nexus 2

1 X DJM 900 Nexus 2

8X Shure ULXD Receiver

- 6 Handhelds And 6 Lav's

4 X Shure SM57 General Mic.

2 X Shure SM58 W/ Switch Stage Vocal Mic.

1 X Audix DP7 Drum Mic. Kit

2X Radial JDI Passive DI Box

2X Radial J48 Active DI Box

2X Radial J48 Stereo Active DI

1X Radial PROAV2 A/V Direct Box

Stands:

- 6X Tall Booms
- 4X Short Stands

LIGHTS

Pipe Grid: 26' Elevation

Console: Grandma 2 Lite

Moving Lights:

- 20X Chauvet Rogue R2 Beam
- 20X Chauvet Rogue R2 Wash
- 18X Chauvet MK1 Hybrid

Static Lights:

- 26X Chauvet Colordash Par H12LP
- 20X Chauvet Eve P-150UV

Effect Light:

- 6X Chauvet Colorado Panel Q40

Atmosphere:

- 2X Chauvet Amhaze Stadium

Pixel Tubes

- 32X Chauvet Freedom Sticks

A-LOT TECH PACK



DIMENSIONS

100' x 300'

Gates

- 25' motorized Gate
- 10' motorized Gate

Power Disconnects (All 3 Pahse w/ Camlock Connections)

- 1 x 400amp
- 2 x 200amp
- 4 x 100amp
- 1 x 60amp

TRUSS STRUCTURE

See attached drawing for dimensions and info.

if looking to rig on structure all rigging documents must be submitted and approved first

AUDIO

Meyer Sound Leopard Line Array (5 Boxes Per Side)

Meyer Sound 1100-LFC x 4

Galaxy 816

Rio 3224

LIGHTING

Moving Lights

- 12x Clay Paky Mythos 2
- 4x Chauvet R2X Beam
- 4x Chauvet R2X Wash

Static Lights

- 7x Altman PHX RGBW LEKO

Effect Lights

- 4x Chauvet Colorado Q40

Video Tiler

- 1x MA2 NPU

VIDEO

Video Wall 24' x 14'

- 1920 x 1024 Pixel Count

120x ESDLumen Master Outdoor 3.9

STAGING

35 X 4' X 8' Steel Deck

- Adjustable Height From 22" - 48" Height

2x Stair Units

MAKE CONTACT

***CONTACT OUR TEAM TODAY AND LET'S CREATE
SOMETHING SPECIAL TOGETHER.***

events@area15.com

+1.702.846.1900

3215 S. Rancho Drive

Las Vegas, Nevada 89102

www.area15.com



@area15official